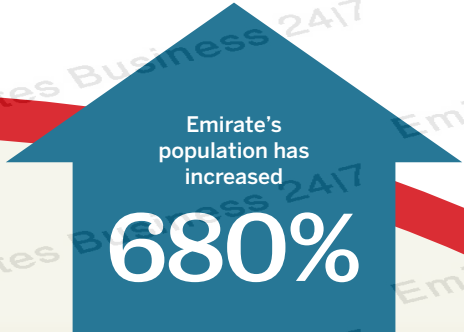




Ajman POPULATION GROWING

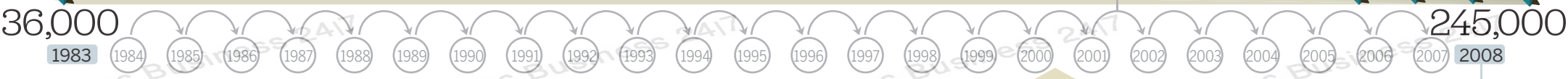
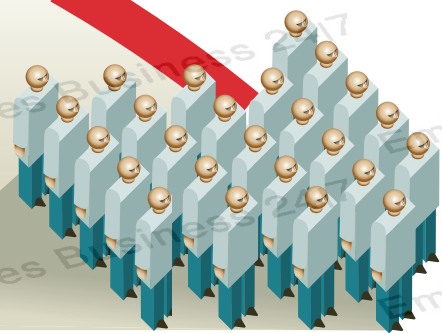


= 10,000 inhabitants

Ajman 2010-2030 predictions

Scenario 1	2	3 (unlikely to happen)
Property sector resumes growth, the population reaches 2.2 m in 2030 and the emirate by that time reaches the limits of its population capacity	The property sector continues its downturn, population reaches 1.3 m	The economy stabilises at current levels and the population growth rate decreases from 8.2 per cent to 5 per cent annually, bringing the population to just 650,000

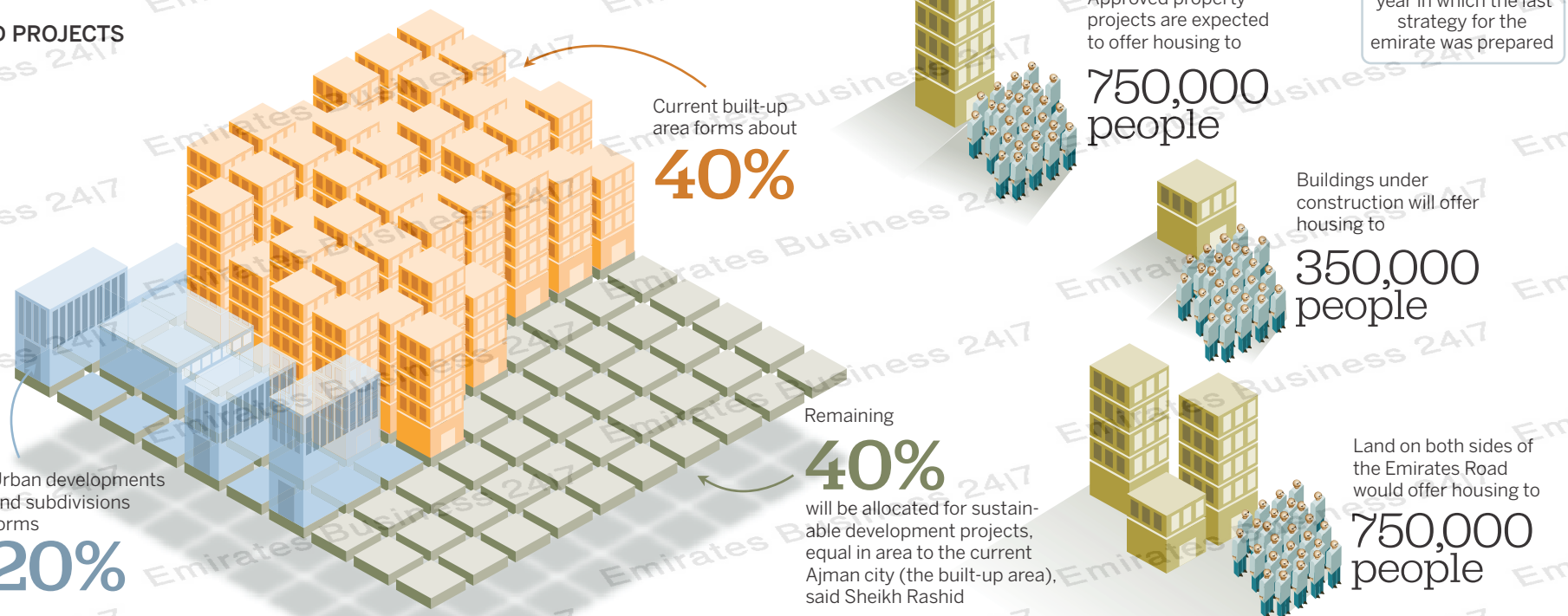
8.2%
annual rate of growth



POPULATION CAPACITY AND PROJECTS

Total population capacity of the city (estimated)
2.2 m people

Total building limits area of the emirate
142 sq km



year in which the last strategy for the emirate was prepared

Approved property projects are expected to offer housing to

750,000 people

Buildings under construction will offer housing to

350,000 people

Land on both sides of the Emirates Road would offer housing to

750,000 people

Remaining **40%** will be allocated for sustainable development projects, equal in area to the current Ajman city (the built-up area), said Sheikh Rashid